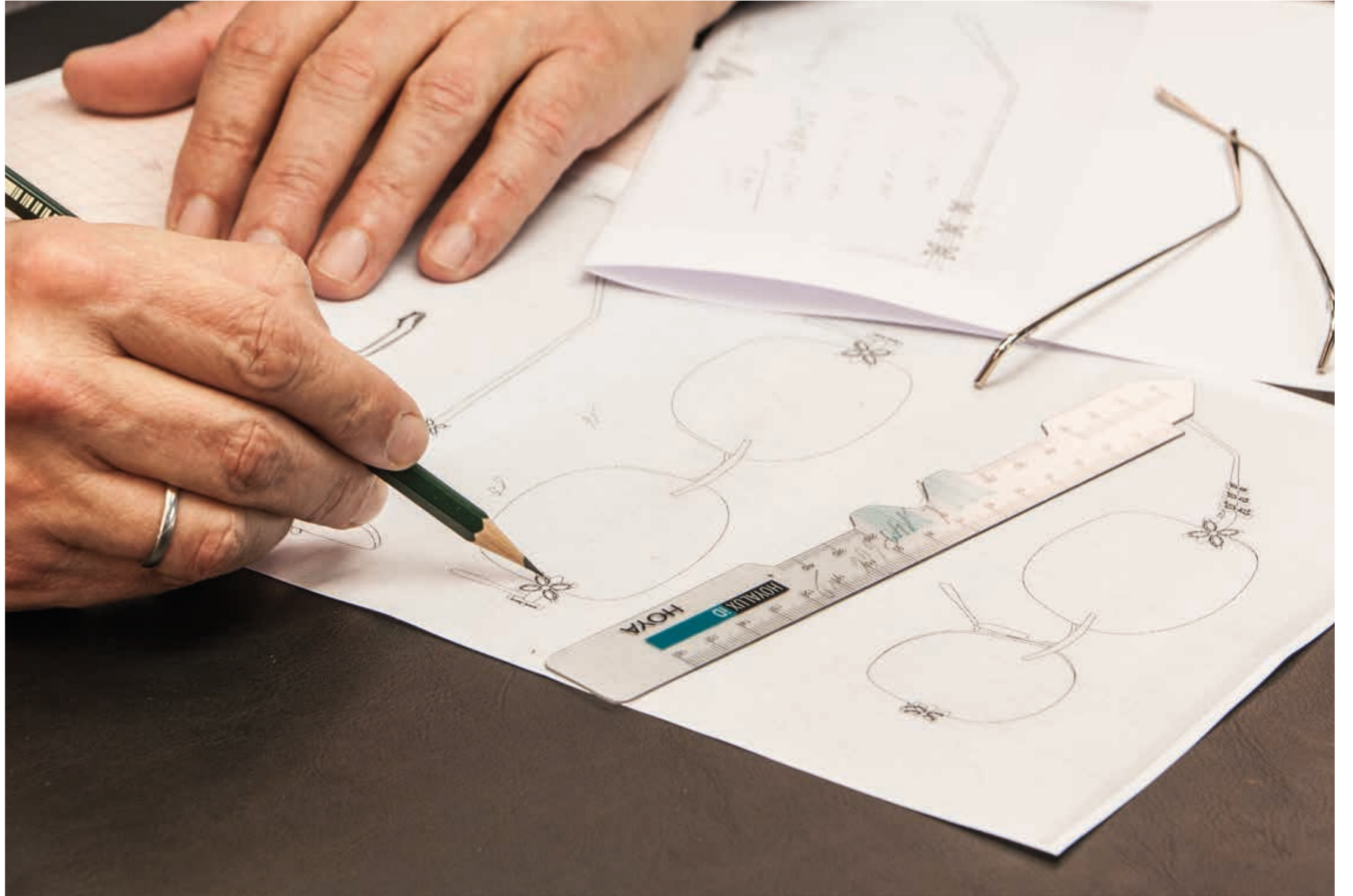


LOTOS

GOLDCOLLECTION 2024





LOTOS - Leidenschaft seit 1872

LOTOS steht für einen Erfahrungsschatz, der seit 150 Jahren über fünf Generationen hinweg weitergegeben und perfektioniert wurde. Dieses gewachsene Wissen ist Garant für Exklusivität, Qualität und Beständigkeit einer LOTOS Brille - ein Leben lang.

Althergebrachte und eigens entwickelte Fertigungsstufen werden mit den neuesten Technologien verbunden. Atemberaubende Diamantkreationen, Gravuren in zeitgenössischen und historischen Mustern, meisterlich von Hand ausgearbeitet, sowie anspruchsvolle Designs, machen eine LOTOS Goldbrille zeitlos und unnachahmlich.

Mit kompromisslosem Bekenntnis zur wahren Anmut, Schönheit und Wertigkeit schafft Stephan Schmidt aus Legenden Emotionen und aus Emotionen Legenden.

LOTOS - Passion since 1872

LOTOS stands for a wealth of experience which has been passed on and perfected for 150 years for five generations. This knowledge, built on a legendary history of manufacturing, guarantees the exclusivity, quality and durability of LOTOS glasses - for a lifetime.

Traditional, as well as specially developed techniques, are combined with the latest technologies. Stunning diamond creations and engravings in contemporary and historical patterns, are masterfully crafted by hand into sophisticated designs, making LOTOS luxury eyewear timeless and matchless.

With the uncompromising commitment to the true grace, beauty and value, turns Stephan Schmidt legends into emotions and emotions into legends.





TABLE OF CONTENTS



RETRO 1872	08 - 25
BASIC PURE	26 - 47
RIMLESS / RANDLOS	28 - 35
HALFRIM / NYLOR	36 - 39
FULLRIM / VOLLRAND	40 - 47
ACETATE GOLD	48 - 55
CLASSIC SIGNATURE	56 - 93
ENGRAVING	58 - 67
SELECTION	68 - 87
BUFFALO HORN	88 - 93
SUN TRAVELLER	94 - 105
PLATIN BLUE	106 - 111
FINE JEWELRY	112 - 125
HIGH JEWELRY	126 - 139
POS	140 - 151

A close-up photograph of a hand wearing a black nitrile glove, holding a small, ornate silver spoon. The spoon has a rounded, textured bowl and a slender stem. The background is a blurred, dark mechanical component, likely a watch movement, showing concentric circular patterns. A white rectangular box with a thin black border is positioned in the upper right quadrant, containing the text "RETRO 1872".

RETRO 1872

LOTOS



Model **L-0G002**

750/-18kt Gold

Size **48-20 145**



LOTOS



Model **L-10G002**

750/-18kt Gold

Size **46-23 140**



LOTOS



Model **L-13V888**

750/-18kt Gold

Size **46-20 145**



Art Engraving



LOTOS



Model **L-16D004**

750/-18kt Gold

Size **48-20 145**



Art Engraving



LOTOS



Model **L-16D007**

750/-18kt Gold

Size **45-23 145**



Art Engraving & SUN Lenses ZEISS (Z)



LOTOS



Model **L-16D666**

750/-18kt Gold

Size **48-20 145**



Art Engraving



LOTOS



LOTOS



Model **L-19B001**

750/-18kt Gold

Size **47-21 145**



LOTOS



Model **L-19B002**

750/-18kt Gold

Size **48-20 145**



LOTOS



Model **L-20E111**

750/-18kt Gold

Size **48-21 145**



LOTOS



Model **L-20E222**

750/-18kt Gold

Size **48-21 145**





LOTOS



Model **L-21G888**

750/-18kt Gold

Size **49-20 145**



Art Engraving



LOTOS



Model **L-22A002**

750/-18kt Gold

Size **49-23 145**



Art Engraving / Acetate NDX-704



LOTOS



Model **L-22A002**

750/-18kt Gold

Size **49-23 145**



Art Engraving / Acetate TJ-4965





BASIC PURE

LOTOS



Model **L-16B111**

750/-18kt Gold

Size **53-18 140**



LOTOS



Model **L-16B555**

750/-18kt Gold

Size **55-19 140**



Model **L-16B333**

750/-18kt Gold

Size **57-18 145**



Model **L-16B888**

750/-18kt Gold

Size **55-18 140**



LOTOS



Model **L-19A111**

750/-18kt Gold

Size **54-18 140**



T-Tipp Engraving



LOTOS



Model **L-19A222**

750/-18kt Gold

Size **55-17 140**



T-Tipp Engraving



LOTOS



Model **L-22B111**

750/-18kt Gold

Size **55-17 140**



LOTOS



Model **L-22B222**

750/-18kt Gold

Size **55-18 140**



LOTOS



Model **L-22B333**

750/-18kt Gold

Size **56-18 145**



LOTOS



Model **L-22B555**

750/-18kt Gold

Size **56-18 145**



LOTOS



Model **L-24A011**

750/-18kt Gold

Size **55-19 145**



LOTOS



Model **L-24A022**

750/-18kt Gold

Size **56-17 145**



LOTOS



Model **L-24A088**

750/-18kt Gold

Size **55-19 140**



LOTOS



Model **L-24A099**

750/-18kt Gold

Size **56-18 145**





LOTOS



Model **L-24B001**

750/18kt Gold

Size **55-16 145**



LOTOS



Model **L-24B003**

750/-18kt Gold

Size **55-19 145**



LOTOS



Model **L-24B004**

750/-18kt Gold

Size **55-19 145**



LOTOS



Model **L-24B006**

750/-18kt Gold

Size **57-16 145**



LOTOS



Model **L-24B007**

750/-18kt Gold

Size **55-19 145**



LOTOS



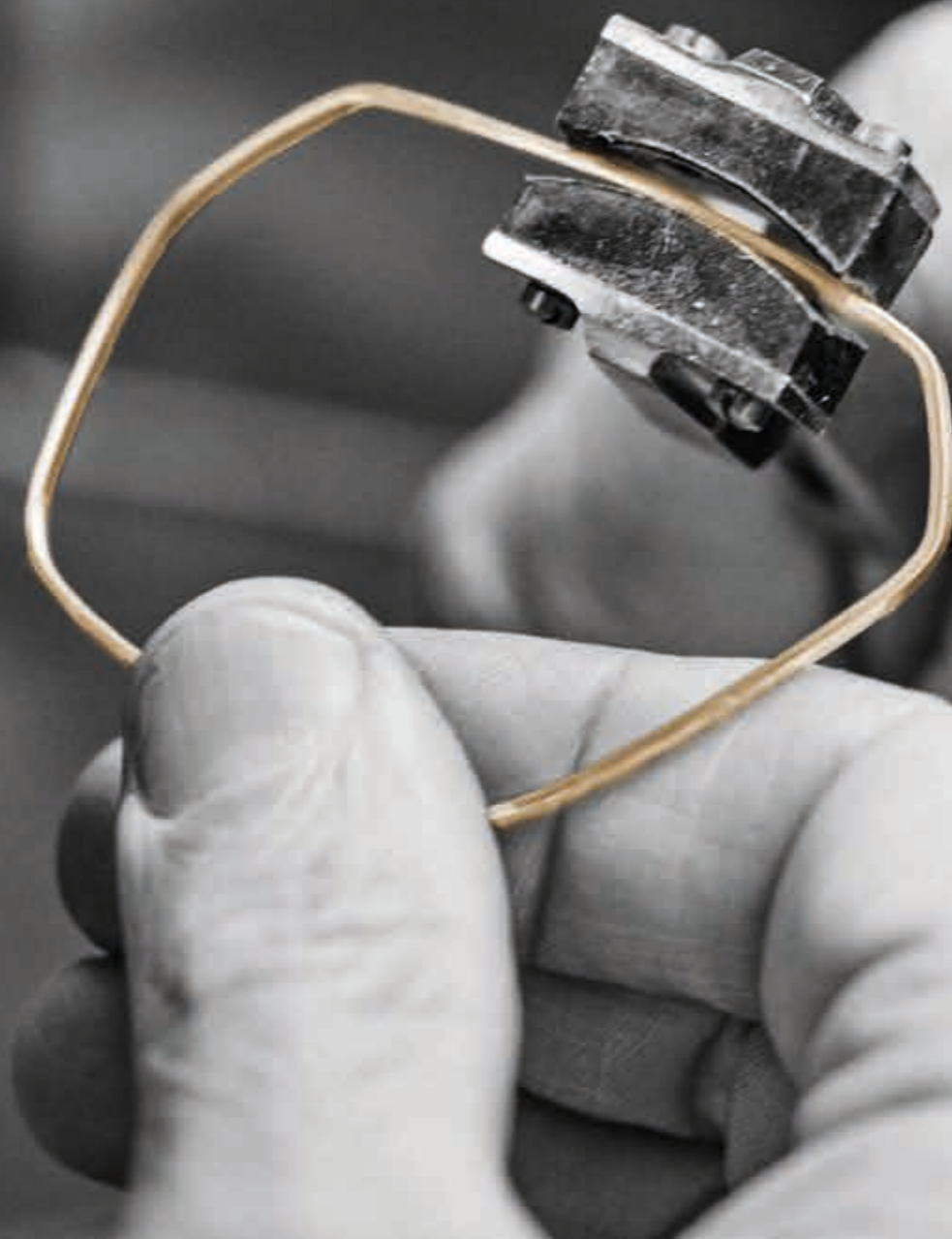
Model **L-24B009**

750/-18kt Gold

Size **53-19 145**



ACETATE GOLD



LOTOS



Model **L-23A001**

750/-18kt Gold

Size **51-22 145**



Acetate TJ-4950



LOTOS



Model **L-23A001**

750/-18kt Gold

Size **51-22 145**



Acetate TJ-4991



LOTOS



Model **L-23A002**

750/-18kt Gold

Size **53-22 145**



Acetate TJ-4964



LOTOS



Model **L-23A002**

750/-18kt Gold

Size **53-22 145**



Acetate TJ-4965



LOTOS



Model **L-23A005**

750/-18kt Gold

Size **50-22 145**



Acetate H-8354



LOTOS



Model **L-23A005**

750/-18kt Gold

Size **50-22 145**



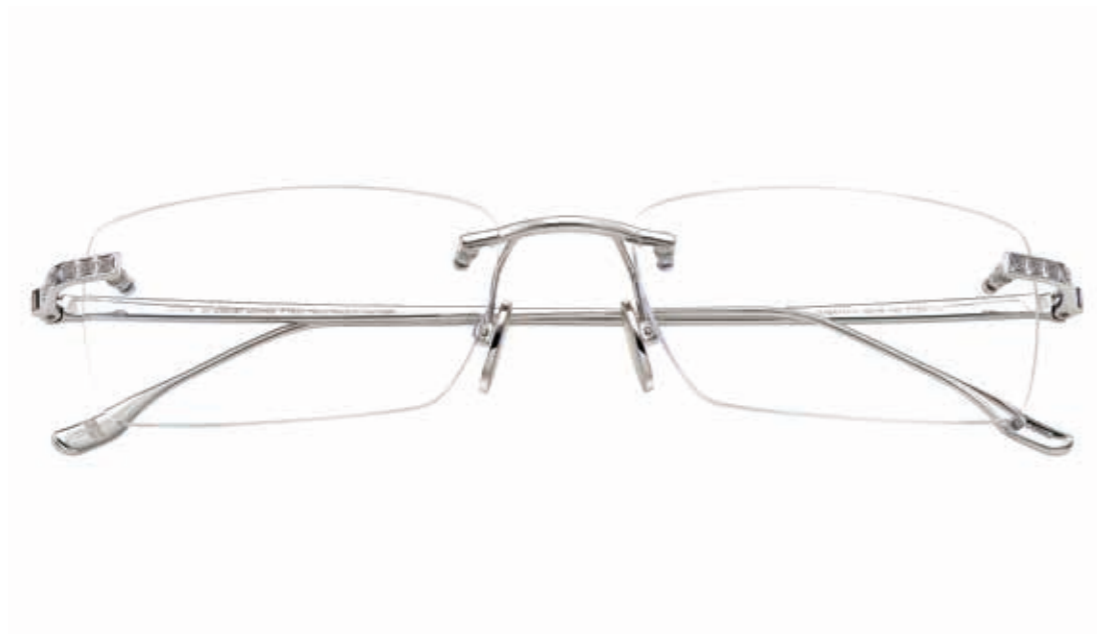
Acetate RS-1915





CLASSIC SIGNATURE
Engraving

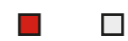
LOTOS



Model **L-15A111 V**

750/-18kt Gold

Size **56-18 145**



Guilloché Art Engraving



LOTOS



Model **L-16G666 V**

750/-18kt Gold

Size **56-18 140**



14 Diamond Brilliance Cut 0.07 ct.
Creative Art Engraving
Gold Pads 18kt optional



LOTOS



Model **L-18B033 V**

750/-18kt Gold

Size **56-18 145**



Scroll Art Engraving



LOTOS



Model **L-20G888 V**

750/-18kt Gold

Size **56-18 140**



Iceberg Art Engraving



LOTOS



Model **L-21D007 V**

750/18kt Gold

Size **44-23 145**



Antique Art Engraving



LOTOS



Model **L-21G033 V**

750/-18kt Gold

Size **55-19 140**



Laureus Art Engraving



LOTOS



Model **L-21G111 V**

750/-18kt Gold

Size **56-19 140**



Laureus Art Engraving



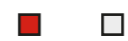
LOTOS



Model **L-21G222 VEN**

750/-18kt Gold

Size **55-17 140**



Leaves Art Engraving & Enamel Décor



LOTOS



Model **L-22G111 VEN**

750/-18kt Gold

Size **56-18 140**



Garland Art Engraving & Enamel Décor





CLASSIC SIGNATURE
Selection

LOTOS



Model **L-20D007**

750/-18kt Gold

Size **44-23 145**



Indiana



LOTOS



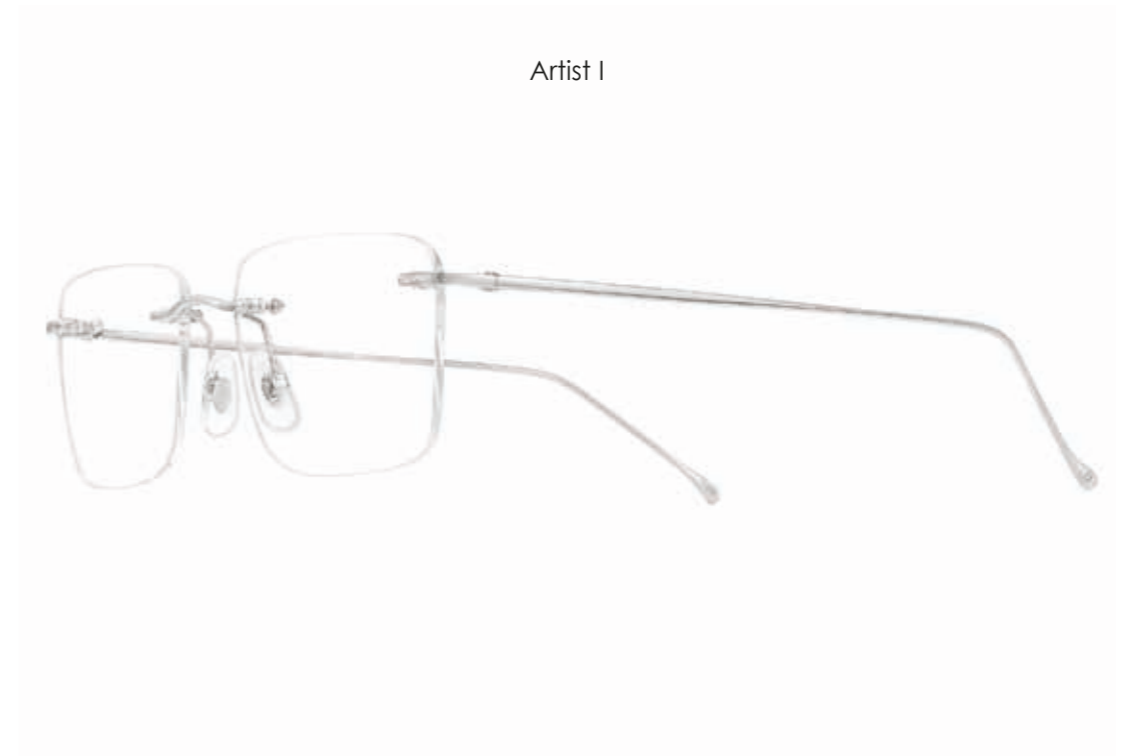
Model **L-20V111**

750/-18kt Gold

Size **56-18 145**



Artist I



LOTOS



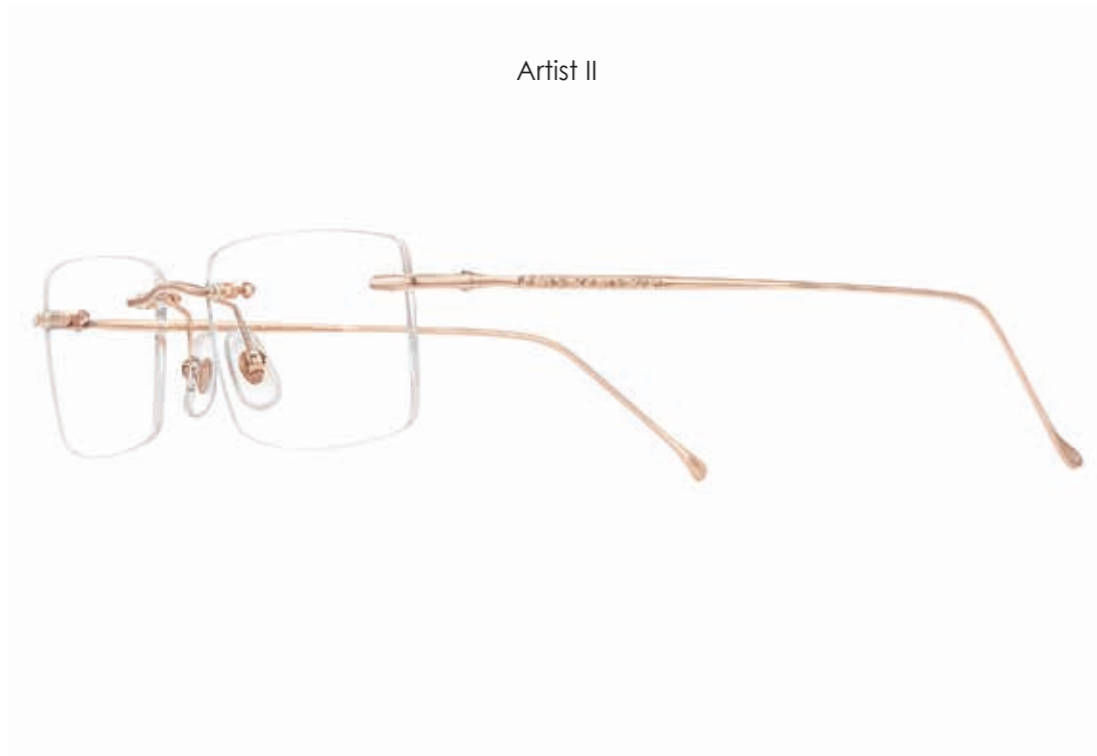
Model **L-20V222**

750/-18kt Gold

Size **56-18 145**



Artist II



LOTOS



LOTOS



Model **L-21D222**

750/-18kt Gold

Size **55-18 140**



Arrow



LOTOS



Model **L-21D555**

750/-18kt Gold

Size **56-19 140**



Empire



LOTOS



Model **L-22D222**

750/-18kt Gold

Size **55-17 140**



Expert



LOTOS



Model **L-22G444**

750/-18kt Gold

Size **56-18 140**



Dragon Neck





LOTOS



Model **L-23D033**

750/-18kt Gold

Size **58-19 145**



Fast & Furious



LOTOS



Model **L-23D055**

750/-18kt Gold

Size **59-17 145**



Fast & Furious



LOTOS



Model **L-23D055**

750/-18kt Gold

Size **59-17 145**



Fast & Furious



LOTOS



Model **L-23D066**

750/-18kt Gold

Size **60-16 145**



Fast & Furious



LOTOS



Model **L-24D099 DEN**

750/-18kt Gold

Size **55-19 140**



Sirius
2 Diamond Princess Cut 0.05 ct. & Enamel Décor



LOTOS



Model **L-24R222**

750/-18kt Gold

Size **56-18 140**



President



LOTOS



Model **L-24R999**

750/-18kt Gold

Size **56-18 140**



Jubilee



LOTOS



Model **L-25B333**

750/-18kt Gold

Size **56-18 145**



Secret



CLASSIC SIGNATURE

Buffalo Horn



LOTOS



Model **L-15D066 H**

750/-18kt Gold

Size **57-19 145**



Buffalo Horn



LOTOS



Model **L-16V222 H**

750/-18kt Gold

Size **57-19 145**



Buffalo Horn & Art Engraving





LOTOS



Model **L-16V999 H**

750-18kt Gold

Size **54-19 140**



Buffalo Horn & Art Engraving



SUN TRAVELLER



LOTOS



Model **LOTOS SUN C17**

750/-18kt Gold

Size **61-15 145**



Sun Lenses ZEISS (Z)



LOTOS



Model **LOTOS SUN C19**

750/-18kt Gold

Size **61-15 145**



Sun Lenses ZEISS (Z)



LOTOS



Model **LOTOS SUN C21**

750/-18kt Gold

Size **56-17 145**



Sun Lenses ZEISS (Z)



LOTOS



Model **LOTOS SUN C31**

750/-18kt Gold

Size **57-19 145**



Sun Lenses ZEISS (Z)



LOTOS



Model **LOTOS SUN C32**

750/-18kt Gold

Size **60-18 145**



Sun Lenses ZEISS (Z)



LOTOS



Model **LOTOS SUN C33**

750/-18kt Gold

Size **58-18 145**



Sun Lenses ZEISS (Z)



LOTOS



Model **LOTOS SUN C36**

750/-18kt Gold

Size **58-17 145**



Sun Lenses ZEISS (Z)



LOTOS



Model **LOTOS SUN C38**

750/-18kt Gold

Size **53-19 145**



Sun Lenses ZEISS (Z)



LOTOS



Model **LOTOS SUN C46**

750/-18kt Gold

Size **50-23 145**



Sun Lenses ZEISS (Z) / Acetate TJ-4964



LOTOS



Model **LOTOS SUN C46**

750/-18kt Gold

Size **50-23 145**



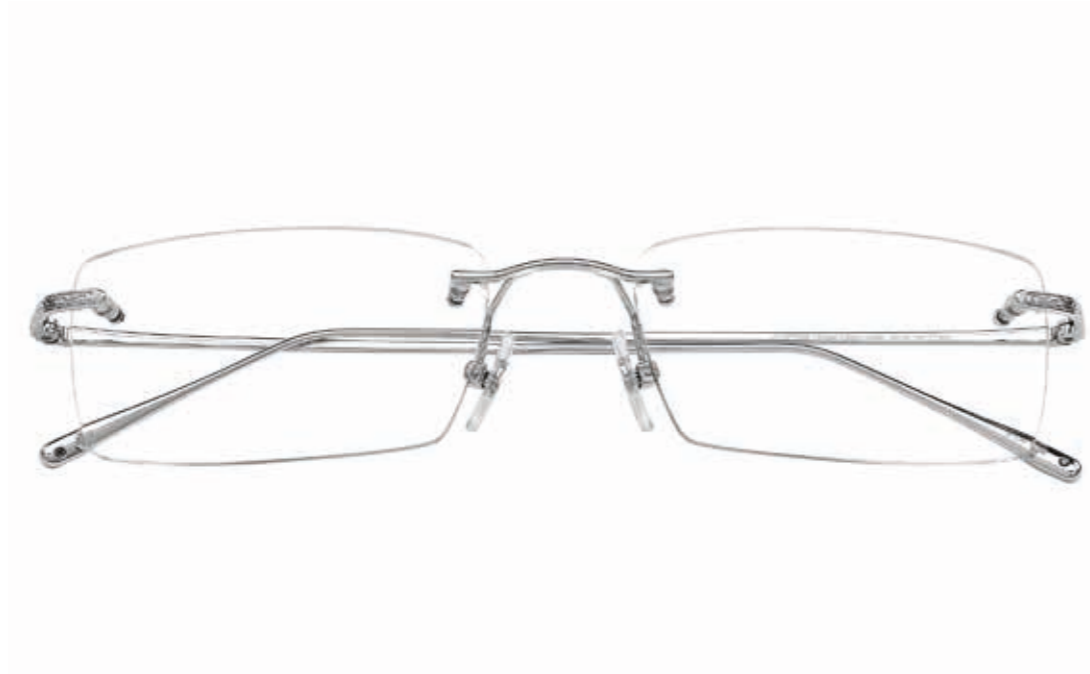
Sun Lenses ZEISS (Z) / Acetate TJ-4965





PLATIN BLUE

LOTOS



Model **L-16PT888**

PT950

Size **56-19 145**



Art Engraving

Platinum 88 Limited Edition



LOTOS



Model **L-17PT444**

PT950

Size **55-18 140**



Art Engraving



LOTOS



Model **L-17PT999**

PT950

Size **57-18 145**



Art Engraving



LOTOS



Model **L-19PT088**

PT950

Size **55-19 140**



Art Engraving





FINE JEWELRY

LOTOS



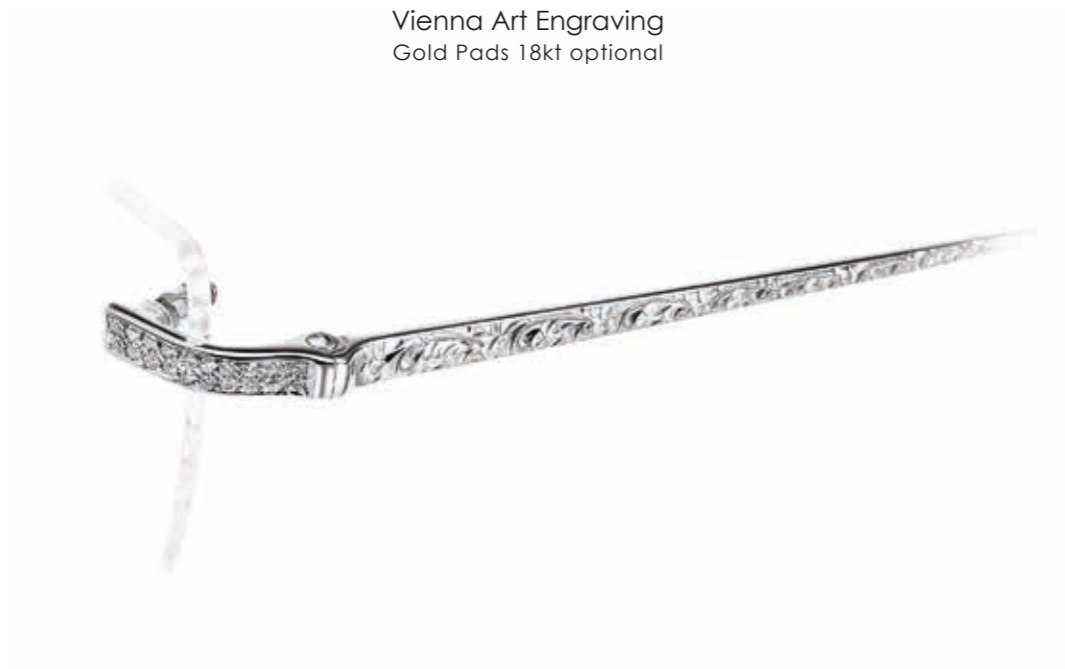
Model **L-15A111 VD**

750/-18kt Gold

Size **56-18 145**



40 Diamond Brilliance Cut 0.20 ct.
Vienna Art Engraving
Gold Pads 18kt optional



LOTOS



Model **L-16D888 D**

750/-18kt Gold

Size **54-17 140**



86 Diamond Brilliance Cut 0.43 ct.



LOTOS



Model **L-20D999 DEN**

750/-18kt Gold

Size **56-18 140**



12 Diamond Baguette Cut 0.64 ct.
Enamel Décor



LOTOS



Model **L-20G888 D**

750/-18kt Gold

Size **56-18 140**



126 Diamond Brilliance Cut 0.44 ct.



LOTOS



Model **L-21G555 D**

750/-18kt Gold

Size **55-17 140**



120 Diamond Brilliance Cut 0.60 ct.



LOTOS



Model **L-23D022 D**

750/-18kt Gold

Size **55-18 140**



132 Diamond Brilliance Cut 0.90 ct.





LA17404 55-18 145 125 135 CE

LOTOS



Model **L-22D333 DS**

750/-18kt Gold

Size **56-18 140**



16 Diamond Princess Cut 0.80 ct.
18 Sapphire Princess Cut 1.00 ct.



LOTOS



Model **L-22D333 DR**

750/-18kt Gold

Size **56-18 140**



16 Diamond Princess Cut 0.80 ct.
18 Ruby Princess Cut 0.97 ct.



LOTOS



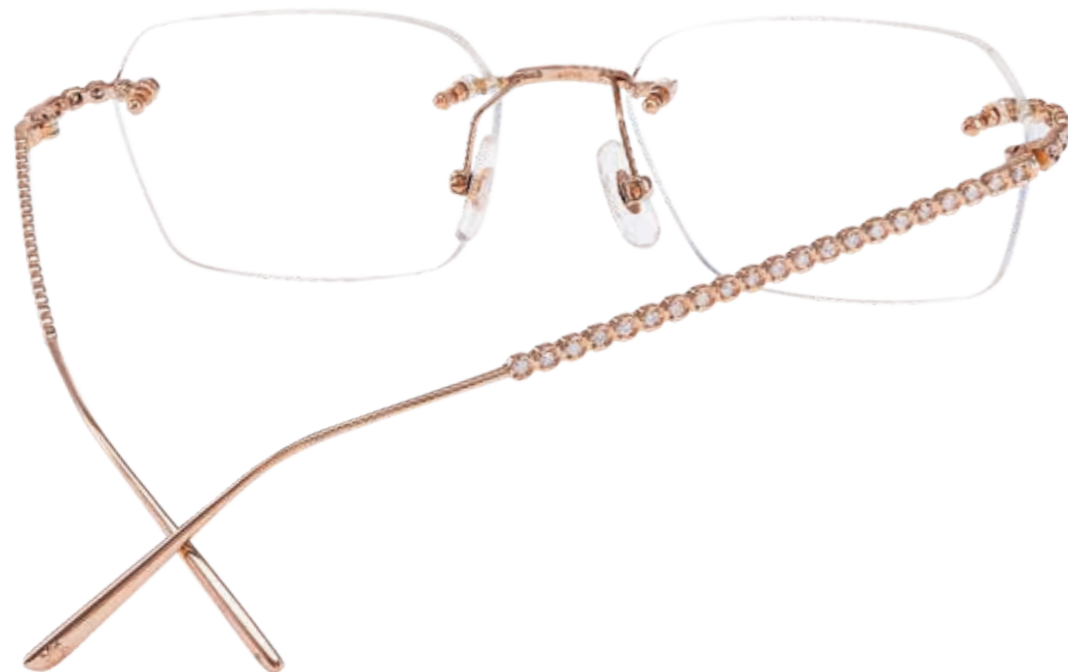
Model **L-23G666 D**

750/-18kt Gold

Size **55-18 140**



54 Diamond Brilliance Cut 1.73 ct.



LOTOS



Model **L-24R222 D**

750/-18kt Gold

Size **56-18 140**



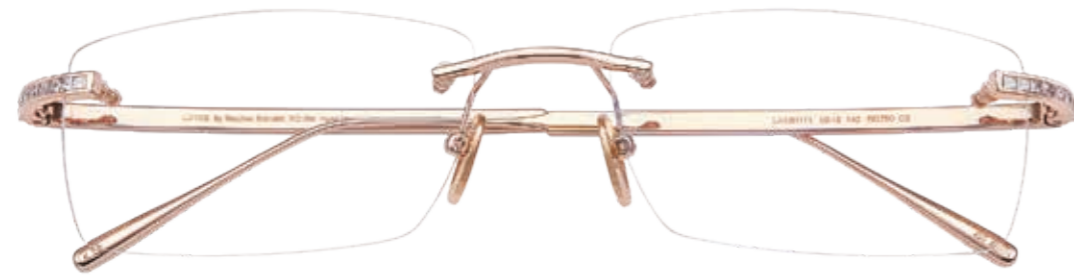
166 Diamond Brilliance Cut 0.32 ct.





HIGH JEWELRY

LOTOS



Model **L-15H111 D**

750/-18kt Gold

Size **56-18 140**



84 Diamond Princess Cut 4.20 ct.
Gold Pads 18kt included



LOTOS



Model **L-17A999 S**

750/-18kt Gold

Size **55-18 140**



88 Sapphire „Blue Gradient“ Princess Cut
Gold Pads 18kt included



LOTOS



Model **L-17A999 GEM**

750/-18kt Gold

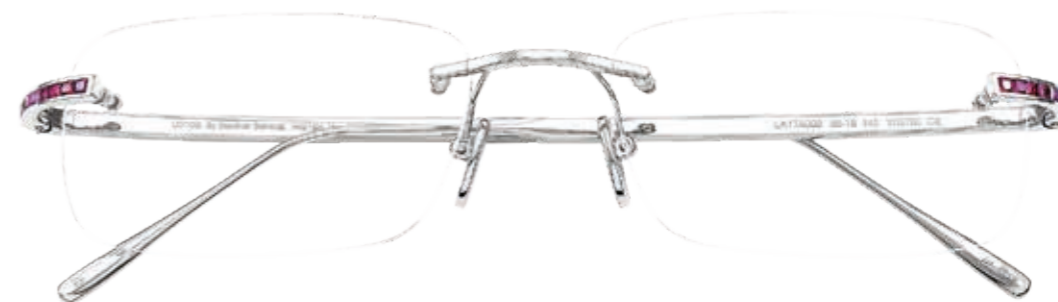
Size **55-18 140**



88 Sapphire „Rainbow“ Princess Cut
Gold Pads 18kt included



LOTOS



Model **L-17A999 R**

750/-18kt Gold

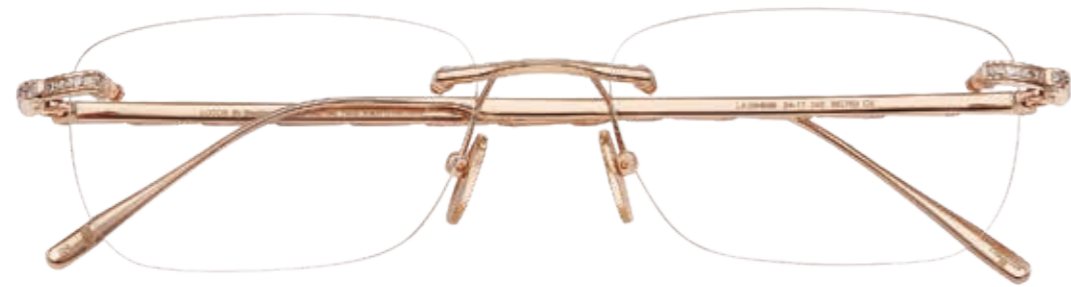
Size **55-18 140**



88 Ruby “Red Gradient” Princess Cut
Gold Pads 18kt included



LOTOS



Model **L-19H999 D**

750-18kt Gold

Size **54-17 140**



116 Diamond Princess Cut 2.48 ct.
40 Diamond Brilliance Cut 0.20 ct.
Gold Pads 18kt included



LOTOS



Model **L-20D999 D**

750/-18kt Gold

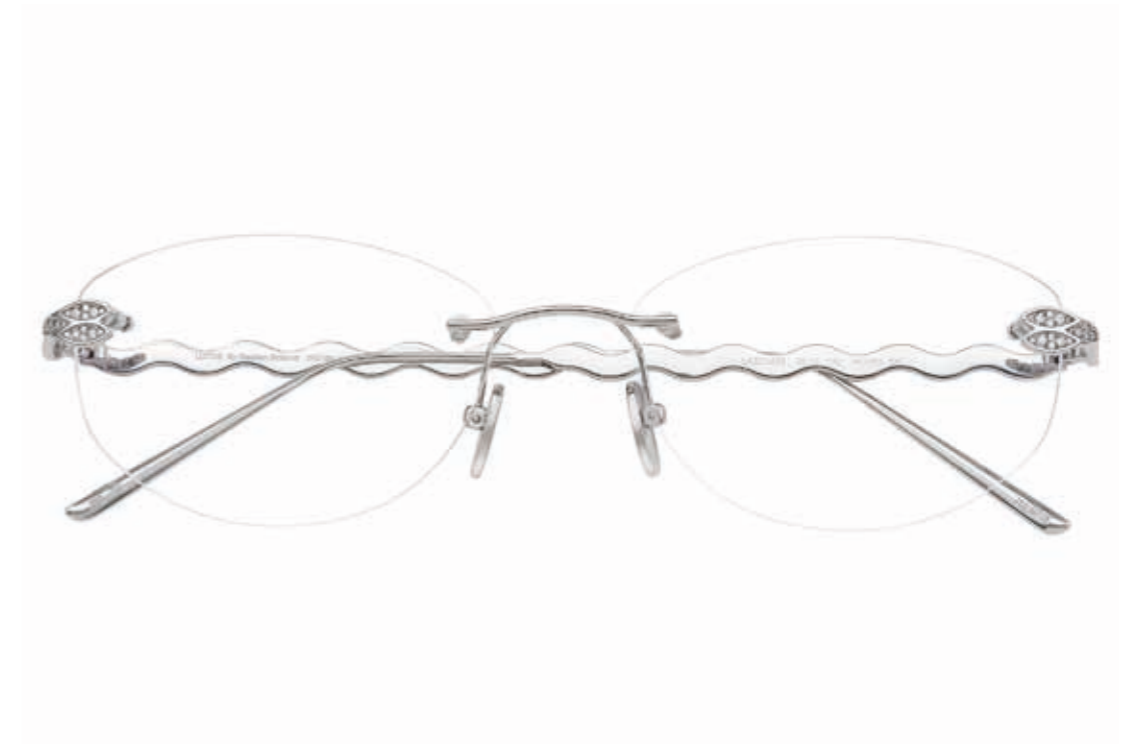
Size **56-18 140**



64 Diamond Baguette Cut 3.70 ct.
Gold Pads 18kt included



LOTOS



Model **L-22G888 D**

750/-18kt Gold

Size **56-18 140**



204 Diamant Brilliance Cut 1.11 ct.
Gold Pads 18kt included

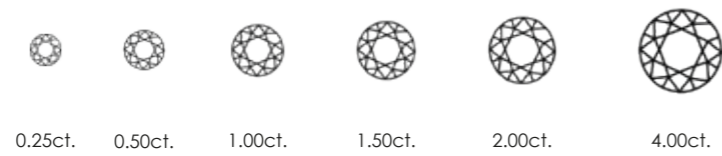




LOTOS

CARAT

A carat, equivalent to 0,2 grams, is the standardised unit of weight for diamonds, and is not necessarily a reflection of size. We select only diamonds that are cut with the right proportions where the weight of the diamond is well reflected in its face and not hidden away in its depth.



CUT

The term „cut“ refers to both their shape and to the number of facets, their size and their relative proportions on the surface of a diamond; it is the most crucial factor in optimising the diamonds light performance. As jewellers of light we specifically prescribe the precise proportions of every diamond.



A flat cut or too large a table dulls the diamond and creates a large angle effect across the crown.



LOTOS

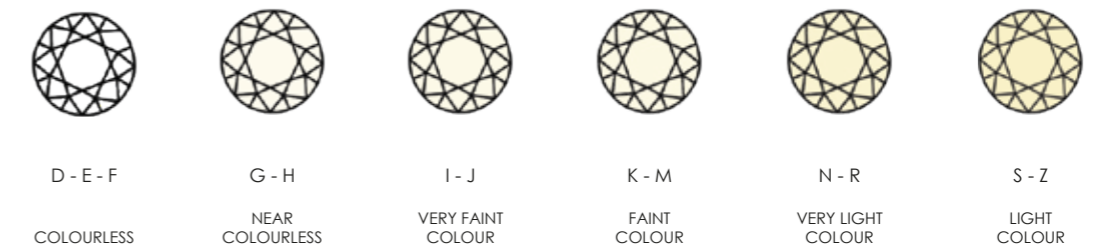
CLARITY

Sometimes nature leaves its fingerprint on a diamond in the form of a natural inclusion so small that it is invisible to the naked eye. While the greatest beauty often lies in the greatest clarity, entirely flawless diamonds are extremely rare, and a diamonds transparency is even more important. The beauty of the diamond is at the heart of our designs; no diamond contains inclusions that affect the twinkle in its eye.



COLOUR

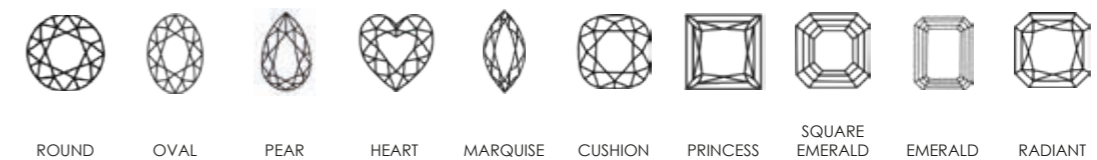
The colour of the diamond, while extremely important, is also the most personal of choices. Whether colourless, slightly warmer, or perhaps even a fancy colour, you will recognise the right colour for you.



SHAPE

A well-cut diamond can make light perform in breathtaking ways. Like love itself, the luminous blaze of your diamond should sweep you of your feet. Within the heart of every diamond is a radiance that was billions of years in the making.

LOTOS only selects diamonds that have been sculpted by the most delicate, careful and experienced of hands.



P O S



LOTOS



LOTOS



LOTOS



LOTOS



LOTOS



LOTOS



LOTOS



90025

LOTOS

POS

90006 Eyewear Display LARGE

90007 Eyewear Display SMALL

90008 Logo Display LARGE

90009 Logo Display SMALL

90043 Gloves SMALL / MEDIUM / LARGE

90044 Cleaning Cloth SMALL / LARGE

90025 Repair- and Spare Part Set



LOTOS By Stephan Schmidt RG18kt Hand Made In Germany



750

LOTOS

LOTOS ®™ is an international registered TRADEMARK by LOTOS Goldbrillen GmbH Germany

Masterseal is a certified and registered hallmark under the own and use by LOTOS Goldbrillen GmbH Germany

LOTOS copyright © 2024





WWW.LOTOSGOLD.DE